

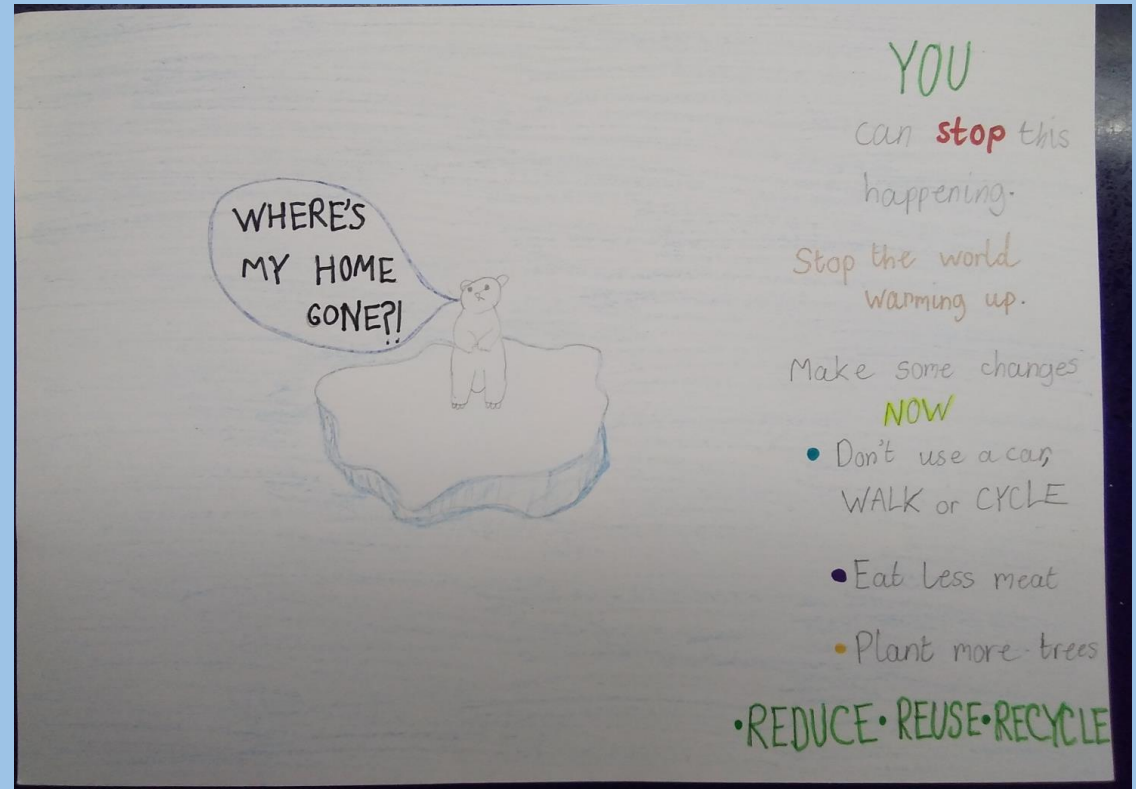


W/C 12.2.21 Seesaw Highlights.

Class 3



Finley



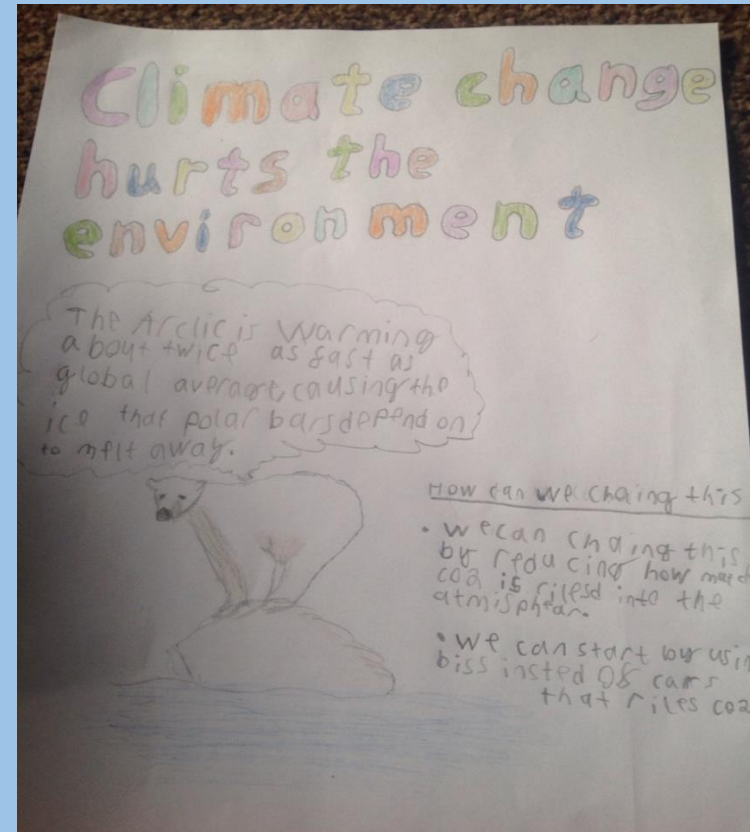
Amina

Geography Week

Our class topic was 'Climate Change' and the children created some very powerful posters about global warming.



Henry



Riley

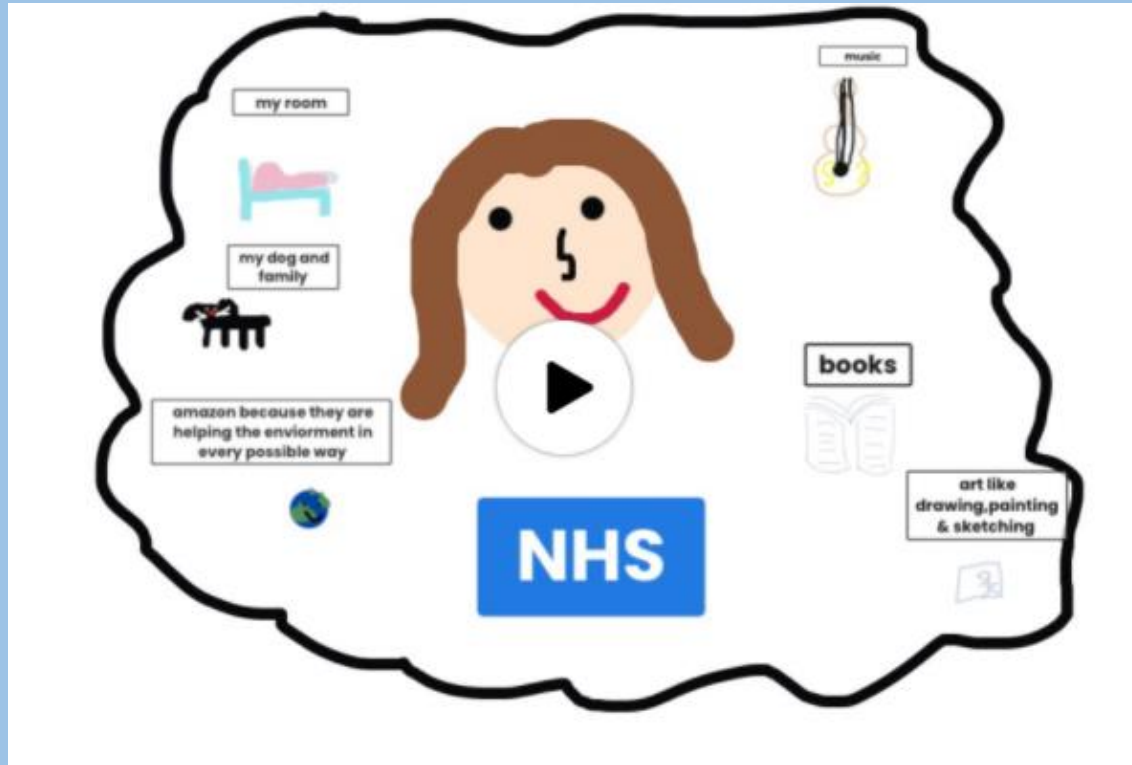
Geography Week

They were so good I needed two slides!

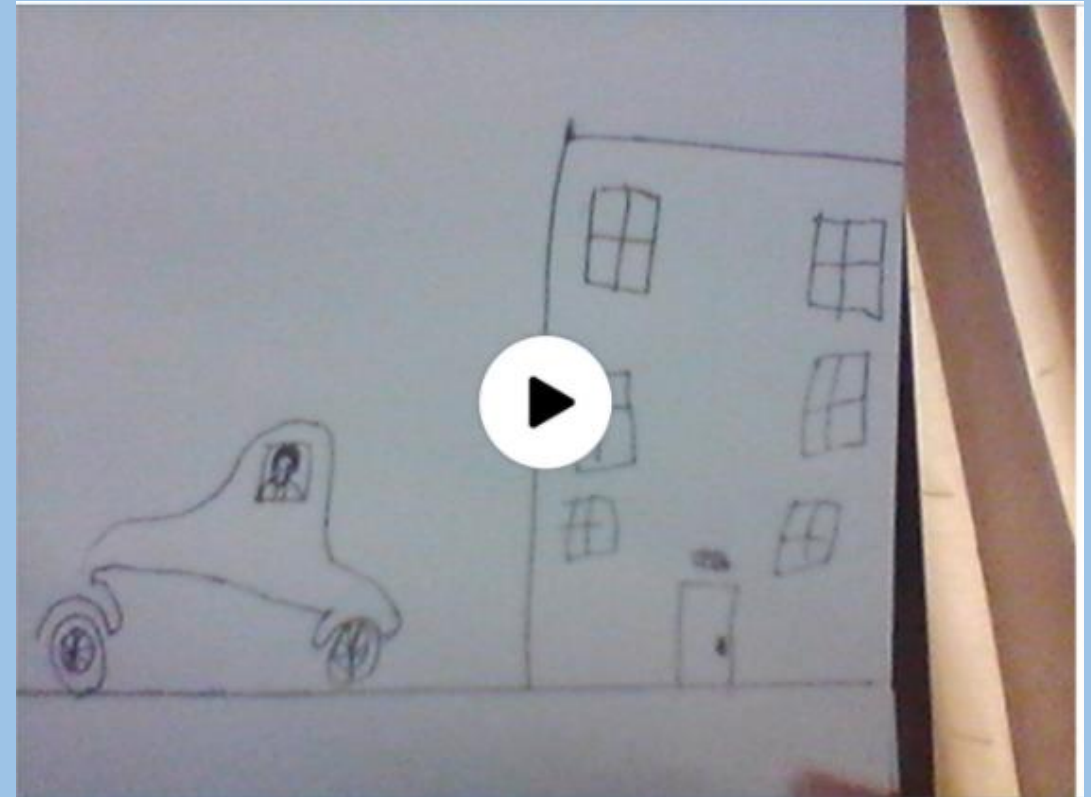
Mindfulness

In our mindfulness sessions we focused on the things we are grateful for. Excuse the play symbols as the children also record their thoughts.

Ava



Freddie



Maths

The children of Class 3 rounded off their learning about statistics with some excellent work on block diagrams.

Block Diagrams

4a. Complete the table to match the block diagram below.

Pet	Number of children
Cat	10
Dog	12
Fish	4
Rabbit	8

4b. Complete the table to match the block diagram below.

Name	Number of Goals
Sanj	15
Kim	25
Jem	20
Mack	5

5a. Use the block diagram to answer the questions below.

A. Which colour is the most popular? **Red**

B. How many fewer children like pink than green? **1**

C. In total, how many children like pink and blue? **5**

5b. Use the block diagram to answer the questions below.

A. When were the least ice creams sold? **April**

B. How many more ice creams were sold in July than in April? **40**

C. In total, how many ice creams were sold in May and June? **70**

6a. Complete the block diagram to represent the data shown in the table.

House	Points
Sharks	20
Owls	10
Hawks	40
Foxes	60

6b. Complete the block diagram to represent the data shown in the table.

Vehicle	Number
Car	12
Bus	6
Lorry	4
Bike	8

Jennifer

Block Diagrams

1a. Complete the table to match the block diagram below.

Month	Number of Birthdays
March	3
April	5
May	5
June	6

1b. Complete the table to match the block diagram below.

Animal	Number
Cow	3
Pig	4
Hen	10
Sheep	3

2a. Use the block diagram to answer the questions below.

A. How many children like pears? **3**

B. In total, how many children like plums and apples? **7**

C. Which fruit was the least popular? **Beet**

2b. Use the block diagram to answer the questions below.

A. How many Beech trees were counted? **3**

B. In total, how many Oak and Ash trees were there? **5**

C. Which tree was counted the most? **Elm**

3a. Complete the block diagram to represent the data shown in the table.

Club	Number of children
Dance	5
Boxing	3
Crafts	7
Tennis	4

3b. Complete the block diagram to represent the data shown in the table.

Toy	Number
Doll	4
Robot	7
Train	2
Ball	6

classroomsecrets.co.uk

Ryan